

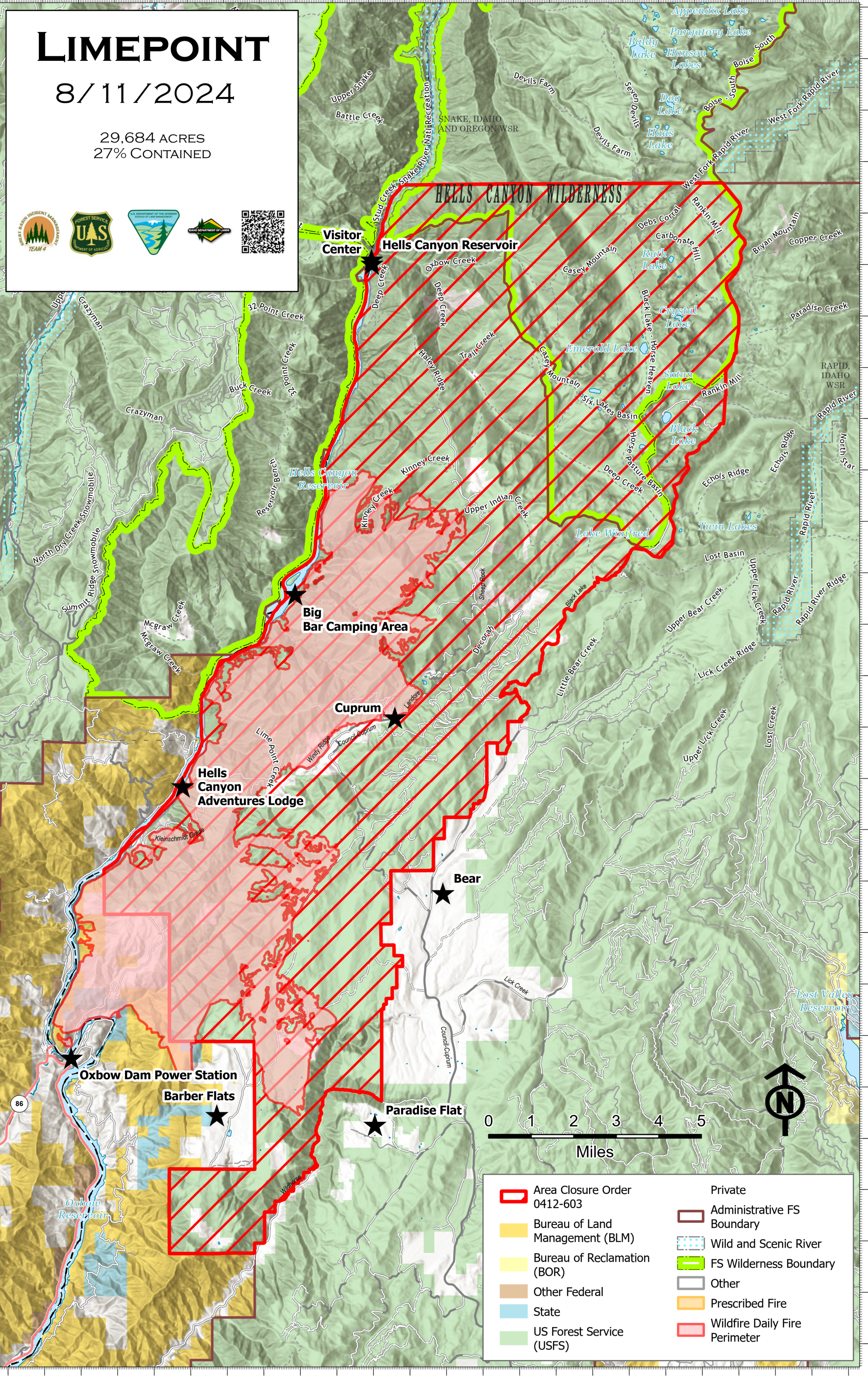
LIMEPOINT

8/11/2024

29,684 ACRES
27% CONTAINED



44°52.35'N 44°53.4'N 44°54.45'N 44°55.5'N 44°56.55'N 44°57.6'N 44°58.65'N 44°59.7'N 44°59.75'N 45°0.75'N 45°1.8'N 45°2.85'N 45°3.9'N 45°4.95'N 45°6'N 45°7.05'N 45°8.1'N 45°9.15'N 45°10.2'N 45°11.25'N 45°12.3'N 45°13.35'N 45°14.4'N 45°15.45'N 45°16.5'N 45°17.55'N 45°18.6'N



Area Closure Order 0412-603	Private Administrative FS Boundary
Bureau of Land Management (BLM)	Wild and Scenic River
Bureau of Reclamation (BOR)	FS Wilderness Boundary
Other Federal	Other
State	Prescribed Fire
US Forest Service (USFS)	Wildfire Daily Fire Perimeter

